



# SEA spol. s r.o.

## Společnost pro elektronické aplikace

Company SEA spol. s r.o. was established in 1992 and holds the ISO 9001:2001 certificate.

# SP6 SMS Processor for Monitoring and Remote Control

## Basic Characteristics

SP6 is a multipurpose module for remote monitoring and control. It enables transmission of eight logic inputs status and control of eight logic outputs using the SMS service on the GSM network. These SMS messages can be received and transmitted by any equipment on the GSM network (e.g. mobile telephones, control computer with a GSM modem). The equipment can also be controlled from Internet using SMS gateways.

## Advantages of SP6

- **Simple installation**  
The device is delivered with a frame for mounting onto DIN rail
- **Easy operation**  
just send a SMS message from your mobile telephone in the required form
- **Available with a backup power supply source 230V AC**  
variant SP6-BOX
- **Free configuration SW**  
user defined module behaviour according to requirements including the SMS message form and telephone numbers.

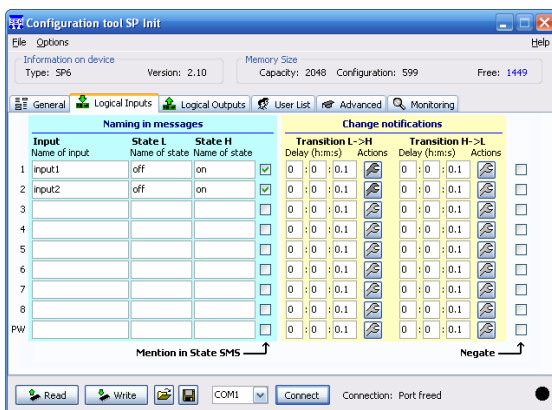
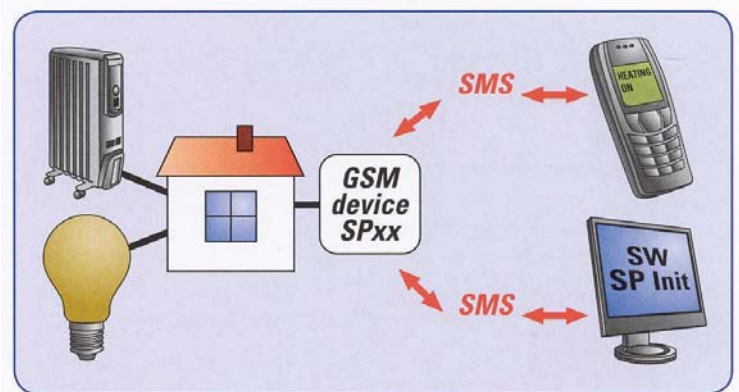
## Use of SP6

- **Technology processes**
- **Industrial objects** – water plants, water reservoirs, small hydroelectric stations, boiler plants
- **Houses, bungalows** – remote control of heating, water heating, air conditioning
- **Event report** – opening of doors, windows, activation of alarm, power supply failure (SP6-BOX)



## Technical Data

**Power supply:** 8-30V, 0,5A  
**Logical inputs:**  
 8 inputs, 8-30V, 5mA  
**Logical outputs:**  
 8 outputs, 60V, 100mA  
**Operating temperature:**  
 -20 to +55 °C



## Option with backup power supply – version SP6-BOX

The device is available in version BOX. The GSM device with a power supply 230V AC and a backup battery are mounted into a plastic box which meets IP55 requirements. There is also separate power supply to be used on logical inputs and outputs circuits coming from/to noisy environment.

